

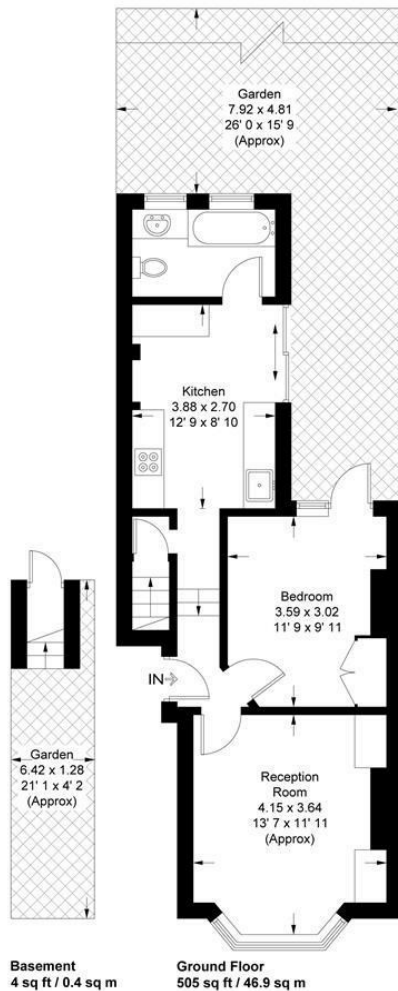
Solon Road | London, SW2



£475,000
Leasehold

Located in this sought after location between Brixton and Clapham a one bedroom ground floor conversion flat with a private garden. The property comprises a bright reception room with bay window and wooden stripped floors, double bedroom with built-in wardrobe and patio door to the garden, spacious kitchen/breakfast room and bathroom. The flat also benefits from a cellar and a fabulous private garden with potential to extend. This property is within walking distance of Clapham North and Brixton tube stations as well as numerous bars and shops including Brixton Village.

Solon Road
Approximate Gross Internal Area = 509 sq ft / 47.3 sq m



This plan is not to scale and must be used as layout guidance only. All measurements and areas are approximate and should not be relied upon to provide accurate information. This plan must not be relied upon when making property valuations, design considerations or any other such relevant decisions. We accept no responsibility or liability (whether in contract, tort or otherwise) in relation to any loss whatsoever arising from or in connection with any use of this plan or the adequacy, accuracy or completeness of it or any information within it.

Energy Efficiency Rating		Current	Potential
Very energy efficient - lower running costs			
(92 plus) A			
(81-91) B			
(69-80) C			
(55-68) D			
(39-54) E			
(21-38) F			
(1-20) G			
Not energy efficient - higher running costs			
England & Wales		EU Directive 2002/91/EC	
Environmental Impact (CO₂) Rating		Current	Potential
Very environmentally friendly - lower CO ₂ emissions			
(92 plus) A			
(81-91) B			
(69-80) C			
(55-68) D			
(39-54) E			
(21-38) F			
(1-20) G			
Not environmentally friendly - higher CO ₂ emissions			
England & Wales		EU Directive 2002/91/EC	

These particulars are designed to provide a guideline only and cannot be relied upon as a statement of fact. The description represents the opinion of the author and is not intended to provide false or misleading information. Any prospective purchaser should make further checks on its accuracy. All measurements are approximate and floorplans are for representation only.